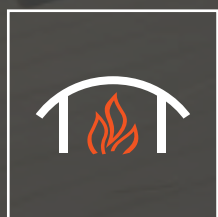




2016 CATALOG



COME TOGETHER.



OUTDOOR FURNITURE





outdoor furniture

Comfortable furniture makes any outdoor room complete. Our furniture is functional and beautiful. Add a fire pit or fire table for ambiance. Now you have a warm, cozy gathering place to relax or entertain with family and friends.

balsam collection



Balsam Collection Chair and Glider in Dupione Aloe with Grandstone Fire Pit Table
ES5074-C-DA and ES5074-G1-DA with GS-1224-BRN-K



Chair
ES5074-C-DC



Glider
ES5074-G1-DC



Rocker
ES5074-HR-DC



Loveseat
ES5074-L-DC



Ottoman
ES5074-O-DC

Special cushion and pillow fabrics are available for Balsam collection furniture. 3 in stock fabrics: Dorsett Cherry, Dupione Aloe, and Spectrum Cilantro. For a custom look, you can choose from over 100 other fabrics available!

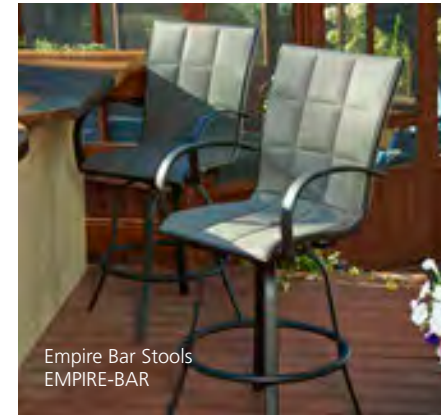
- 1) Select your furniture
- 2) Choose your fabric from names such as Sunbrella and Outdora

- Outdoor-rated resin wicker for easy cleaning
- Powder-coated metal frames
- Deep seating for added comfort
- Choose from 3 standard Sunbrella® fabrics
- Special order fabrics available



Loveseat with Chair in Spectrum Cilantro
ES5074-L-SC with ES5074-C-SC

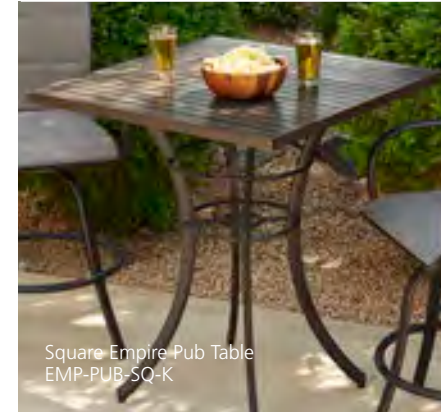
empire collection



Empire Bar Stools
EMPIRE-BAR



Empire Dining Chair
EMPIRE-DINE



Square Empire Pub Table
EMP-PUB-SQ-K



Round Empire Pub Table
EMP-PUB-RD-K

EMPIRE BAR STOOLS

- Outdoor-rated fabric padded sling in Taupe
- Powder-coated aluminum frame in Dora Brown finish
- Swivel Bar Stool is the perfect height for pub tables & outdoor kitchens
- Set of 2

EMPIRE DINING CHAIRS

- Outdoor-rated fabric padded sling in Taupe
- Powder-coated aluminum frame in Dora Brown finish
- Swivel Rocker Dining chair works with both dining height and chat height tables
- Set of 2

EMPIRE SQUARE PUB

- Powder-coated aluminum frame in Dora Brown Finish
- Square top with slatted faux-wood
- Adjustable feet for leveling height
- Pair with INT-EZ for added wow!
- Comes with umbrella hole (with plug)

EMPIRE ROUND PUB

- Powder-coated aluminum frame in Dora Brown Finish
- Round powder-coated metal top in Dora Brown Finish
- Adjustable feet for leveling height
- Pair with INT-EZ for added wow!
- Comes with umbrella hole (with plug)

chat chairs



CFP42-RCH

- Modern powder-coated aluminum frame in Dora Brown with tan cushions or black finish with papaya cushions
- Deep seating on a rocking frame
- Outdoor rated cushions- Papaya is solution-dyed acrylic
- Set of 2



Papaya Chat Chairs
CFP42-RCH-P

naples bar stools



NAPLES-4030-L

- Outdoor resin wicker
- Powder coated aluminum frames in Dora Brown finish
- Swivel bar stool
- Wicker available in Leather color wicker
- Perfect height for Pub Tables and Outdoor Kitchens
- Set of 2



LEGACY ELECTRIC GRILL





legacy electric grill

Healthy cooking electric grills are clean, energy efficient, and deliver real grilling power.

Green Grilling.

legacy electric grill



Now you can grill green in your own backyard and in places where open flames aren't allowed. Balconies, RVs, boats... Just plug it into any ordinary outlet and get all the power you need to grill, sear, roast, bake – mini-size, mega performance. Plus save hundreds of dollars a year on operating costs.

- Quickly reaches temperatures up to 500F
- Cook Number System tells you when your food is perfectly done
- Portable and lightweight
- Regular 120 volts- just plug it in
- Optional grill carts available
- Lifetime warranty on stainless steel
- LED Screen for Cook Number System
- Grease drawer and aluminum tray slide out for easy cleaning
- safe to use inside or out (venting hood needed for indoors)

specifications

GRILL MODEL	HEIGHT	WIDTH	DEPTH	WEIGHT	WATTS	AMPS
LG20i/e-2 Electric Cook Number Grill	9"	21"	19"	36 lbs.	1200	15





CUSTOM OUTDOOR KITCHENS





custom outdoor kitchens

Create your own custom outdoor kitchen island built to order. You create the dream, we create the reality. Call 1.866.303.4028 or contact sales@outdoorrooms.com or to get started.



custom outdoor kitchens

- Define your vision, purpose, and budget
- Determine your space, take measurements
- Think about the layout and desired appliances or accessories
- Choose your custom finishes
- Submit your sketch and email sales@outdoorrooms.com to get started.
- More information can be found at www.outdoorrooms.com/support-custom-products/
- Love the final product? Send us photos! Submit your own photos to sales@outdoorrooms.com.

layout & accesories

Once the layout of your outdoor kitchen is complete, choose from our complete line of #304 stainless steel accessories designed to custom fit your outdoor kitchen. Crystal Fire™ Burners can also be built into outdoor kitchen islands. Want something you don't see here? Let us know and we can add that to your outdoor kitchen for you!

DRAWERS



Combination Door and Drawers - CD2DRW



2 Drawers 2DRW



Trash Bin TRASHTO



Single Drawer 1DRW



3 Drawers 3DRW



Slide Out Cooler Drawer- ICEDRW

DOORS



Single Door 17SNG



27" Double Doors 27DAD



Horizontal Door 17SNG-H



30" Double Doors 30DAD

KITCHEN ACCESSORIES



Danby Refrigerator DAR125SLDD



Stereo, 4 speakers, w/ AUX/USB input MP3/RADIO



Under Counter Lighting LED-STRIP



Side Burner SDBRNR



Stainless Steel Sink SINK

accessory specifications

DRAWERS	WIDTH	HEIGHT	DEPTH
CD2DRW	28 1/2"	19"	21"
2DRW	17 1/4"	12 3/4"	21"
TRASHTO	17 1/4"	24 1/4"	18"
1DRW	17 1/4"	6 1/2"	21"
3DRW	17 1/4"	23 7/8"	21"
ICEDRW	28 1/2"	19"	21"

DOORS	WIDTH	HEIGHT	DEPTH
17SNG	17 1/4"	24 1/4"	N/A
17SNG-H	24 1/4"	17 1/4"	N/A
27DAD	25 1/2"	19"	N/A
30DAD	28 1/2"	19"	N/A

ACCESSORIES	WIDTH	HEIGHT	DEPTH
DAR125SLDD	20 1/2"	33 1/8"	21 1/2"
SINK	15"	6" below w/ 9" faucet above	15"
SDBRNR	8 3/4"	14 1/4"	4" below

*all dimensions listed are cut out specifications

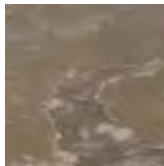
custom finishes

We offer several standard finishes or can deliver a complete, ready-to-finish system that can be finished on-site. Our materials and construction methods are designed to last. For a custom material, tile, or countertop consult our sales staff. Other materials may include solid granite or granite tile, wood accents, stone, metal, etc. Actual finish colors may vary.

SUPERCAST



MOCHA



MARBLEIZED NOCHE

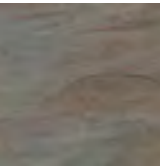


WHITE ONYX

TILE



AUTUMN MIST SLATE



INDIAN MULTI-COLOR SLATE

STUCCO



KEY LARGO BLACK



MORNING MIST



NAPA VALLEY



ARTISAN ACID WASH



POLISHED MIDNIGHT MIST



BARNWOOD



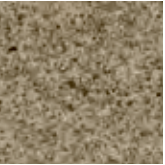
CREME MARBLE



NOCHE MARBLE



SERENGETI



STONY CREEK



VANDYKE



POLISHED BROWN



MARBLEIZED MOCHA



CONTINENTAL SLATE



RIDGE BROWN



GALLERY COLLECTION INDOOR FIREPLACES

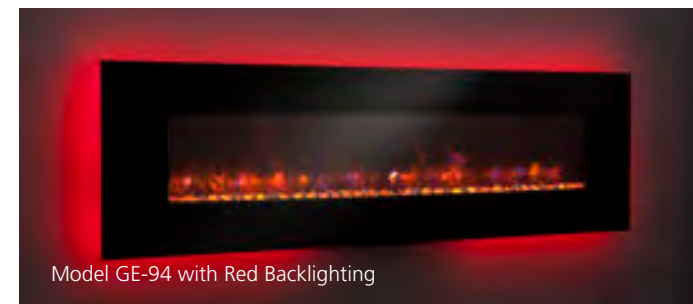
LINEAR WALL-MOUNT	66
LINEAR BUILT-IN	67
BUILT-IN	68
ZERO-CLEARANCE INSERT	69
FIREPLACE INSERT	70



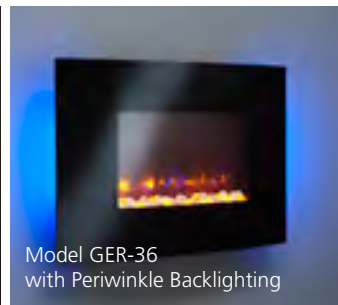
gallery collection indoor fireplaces

Just plug in one of our electric fireplaces for instant ambiance in any room. Each model is CSA tested for safety, fits any room style, and is easy to use. They are cool to the touch but will add warmth to any space. Great for residential, multi-family buildings, and commercial spaces.

linear wall-mount electric fireplaces



Model GE-94 with Red Backlighting



Model GER-36
with Periwinkle Backlighting



Model GE-50 with Soft Orange Backlighting



Model GE-58 with Lavender Backlighting

- Wall-mount on any interior wall with an electrical outlet
- Just plug it in for a beautiful instant fire
- 13 backlight color options*
- Flat glass front*
- Can turn heat on or off and keep the flame for ambiance
- Ambient backlighting comes standard on all models.
- High efficiency LED on fire and backlighting— Uses only 15 watts.
- Operating costs as low as a penny per day with flame and backlighting, and 9-18 cents per hour with the heater on.
- 1500/750 watt heater—up to 5,000 BTU's/hr.
- Ultra-quiet operation
- Full feature remote control.
- Comes in 6 widths 36", 50", 58", 70", 78", & 94".
- CSA tested and approved for safety

specifications

MODEL	HEIGHT	WIDTH	DEPTH	MOUNTING AREA	VIEWING SIZE	WATTAGE
GE-94	26 3/8"	93 3/4"	6"	79"w x 14 1/2"h	75"w x 12"h	1500
GE-78	26 3/8"	78"	6"	63"w x 14 1/2"h	59 1/8"w x 12"h	1500
GE-70	26 3/8"	70"	6"	55"w x 14 1/2"h	51 1/4"w x 12"h	1500
GE-58	26 3/8"	58 1/4"	6"	43"w x 14 1/2"h	39 3/8"w x 12"h	1500
GE-50	26 3/8"	50 3/8"	6"	35"w x 14 1/2"h	31 1/2"w x 12"h	1500
GER-36*	24 1/2"	35 7/8"	6 3/5"	23 1/2"w x 17 7/8"h	20 1/4"w x 12"h	1500

* GER-36 comes standard with a curved glass front and 3 backlight colors.

REMOTE FEATURES

- realistic-looking flame
- ambient backlighting
- fan for heat
- thermostat
- timer



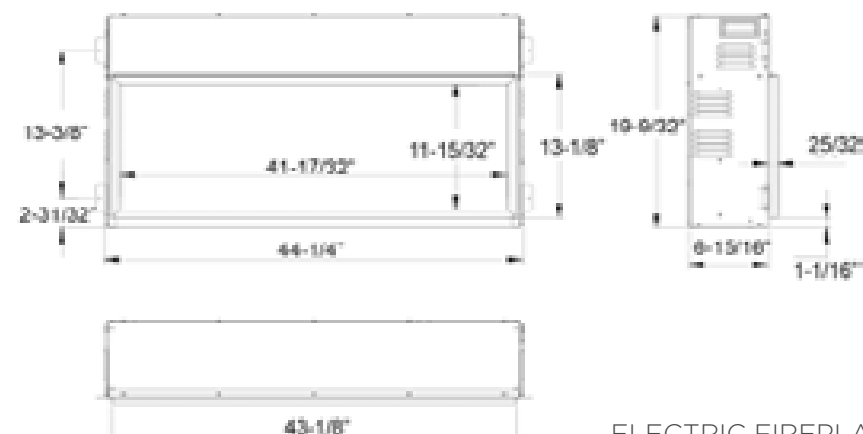
built-in linear electric fireplace



GBL-44 with amber lighting

- Clean "flush finish" installation
- Super quiet operation
- Adds warmth, comfort to any room
- High efficiency Phillips™ brand LED lighting
- Can turn heat on or off and keep the flame for ambiance
- 4 brightness/color options- from crystal clear intense amber flame to a cool blue relaxing flame
- 1500/750 watt heater at 5000 BTU's
- Operating costs as low as a penny per day with flame and backlighting, and 9-18 cents per hour with the heater on.
- Full feature remote control thermostat with sleep timer
- CSA tested and approved for safety

specifications



GBL-44 with cool blue lighting

REMOTE FEATURES

- realistic-looking flame
- ambient backlighting
- fan for heat
- thermostat
- timer



built-in electric fireplaces



Rio Grande Cabinet in Cherry-Stained Finish. Also available unfinished. Shown with optional Book case. Built with GBI-34, FAF-34, RIO34-CAB-RIS-K, & RIO-34-BOOK CASE



Columbia Corner Cabinet shown unfinished. Also available in Cherry-Stained Finish. Optional corner TV stand not shown. Built with GBI-34, LF-34, & COLUMBIA CORNER CAB



Columbia Corner Cabinet in Cherry-Stained Finish. Also available unfinished. Shown with optional corner TV stand. Built with GBI-34, ARF-34, COLUMBIA-CORNER-TV & COLUMBIA CORNER CAB



- Choice of three decorative fireplace fronts: Arched, Louvered, Arched Rectangular
- Choice of two cabinet styles in two finishes: Rio Cabinet or Columbia Corner Cabinet, cherry-stained or unfinished
- Bottom riser included for additional value!
- Operating costs as low as a penny per day with flame and backlighting, and 9-18 cents per hour with the heater on.
- Realistic-looking fire and coals
- High efficiency LED on fire and back lighting— Uses only 15 watts.
- 1500 watt heater
- Full feature remote control
- Ultra quiet 2 speed heater fan
- High impact tempered glass front
- Operates on standard 120 volt plug-in
- 9 different timer settings

REMOTE FEATURES

- realistic-looking flame
- ambient backlighting
- fan for heat
- thermostat
- timer



specifications

MODEL	HEIGHT	WIDTH	DEPTH	WATTAGE
GBI-34	26 1/4"	33 1/2"	11 1/4"	750/1500
GBI-41	31 3/8"	40 3/8"	11 1/4"	750/1500
LF-34	29 3/4"	33 7/8"	1"	NA
LF-41	34 13/16"	40 3/4"	1"	NA
FAF-34	29 3/4"	33 7/8"	1"	NA
FAF-41	34 13/16"	40 3/4"	1"	NA
ARF-34	29 3/4"	33 7/8"	1"	NA
ARF-41	34 13/16"	40 3/4"	1"	NA
COL-COR-RIS-K	45 1/4"	51"	31"	NA
COLUMBIA CORNER TV	4 3/4"	39"	16 1/2"	NA
RIO34-CAB-RIS-K / RIO41-CAB-RIS-K	44 1/2" / 49"	51" / 58"	16" / 16"	NA
RIO-34-BOOK CASE / RIO-41-BOOK CASE	32 3/4" / 32 3/4"	48 1/4" / 54 1/4"	15" / 15"	NA

zero-clearance electric fireplace insert



Zero Clearance Insert with 36" Surround and Heritage Cabinet
GI-32-ZC with IS-36-ZC and HTG-W

- Use virtually anywhere in your home
- Designed for pre-existing fireplaces but can be installed in a custom cabinet, recessed into a wall, or with the Gallery Collection Heritage Cabinet (shown left)
- Great for existing fireplaces, remodeling, or new construction
- Operating costs as low as a penny per day with flame and backlighting, and 9-18 cents per hour with the heater on.
- Realistic-looking fire, logs, and ember bed— choose your flame intensity
- Faux brick background
- LED flame, log, ember bed, and background lighting
- 1450 watt heater— 100% efficient
- Full feature remote control thermostat
- Operates on standard 120 volt plug-in
- CSA tested and approved for safety
- Not pictured: Optional black bottom 4" trim surround piece available for finishing front in pre-existing fireplace (IS-36-ZC-B or IS-42-ZC-B)

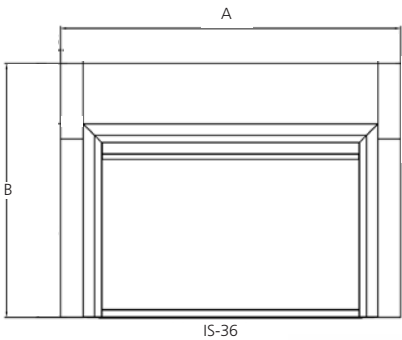
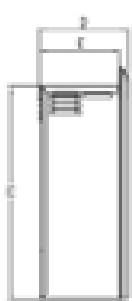
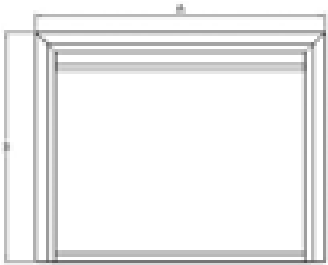
REMOTE FEATURES

- realistic-looking flame
- ambient backlighting
- realistic ember bed lighting
- fan for heat

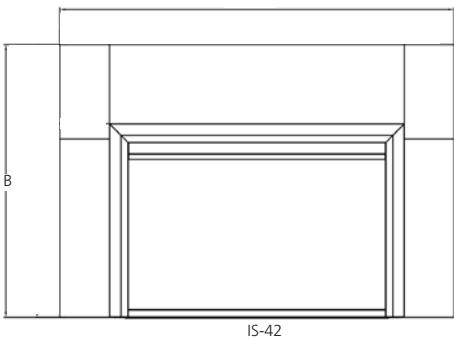


specifications

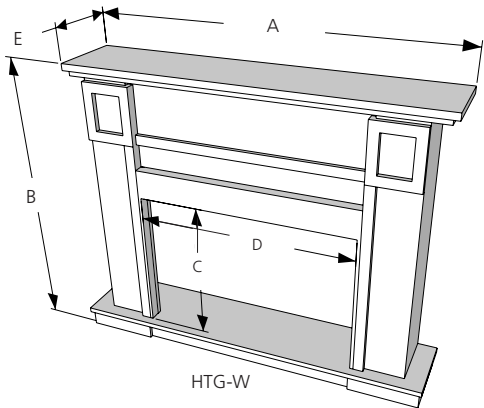
MODEL	A	B	C	D	E	F
GI-32-ZC (fire box only)	31 7/16"	20 9/16"	19"	8 3/4"	8"	29 1/4"
IS-36-ZC	36 1/4"	27	-	-	-	-
IS-42-ZC	42	29	-	-	-	-
HTG-W	55 1/2"	43"	26"	34 1/2"	11"	-



IS-36



IS-42



HTG-W

electric fireplace insert

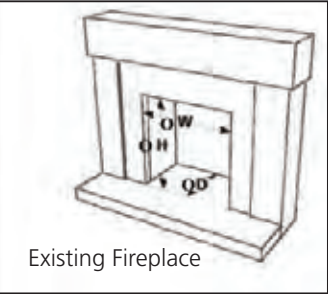
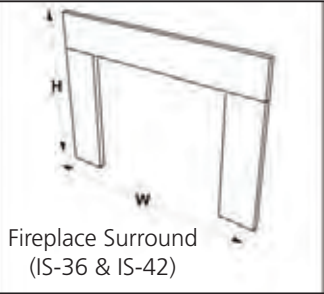


- Use virtually anywhere in your home
- Designed for pre-existing fireplaces but can be installed in a custom cabinet or recessed into a wall
- Operating costs as low as a penny per day with flame and backlighting, and 9-18 cents per hour with the heater on.
- Realistic-looking fire, logs, and ember bed— choose your flame intensity
- Faux brick background
- LED flame, log, ember bed, and background lighting
- 1500 watt heater— 100% efficient
- Full feature remote control
- Ultra quiet 2 speed heater fan
- High impact tempered glass front
- Operates on standard 120 volt plug-in

Can be installed virtually anywhere in your home but is designed for installing into existing fireplaces. With two size fronts this insert fits most sizes of existing masonry wood-burning fireplaces. Turn any traditional fireplace into an easy-to-use, clean, and efficient electric fireplace in minutes.

specifications

MODEL	WIDTH (W)	HEIGHT (H)	DEPTH (D)	FIREPLACE OPENING SIZE				FIREPLACE MINIMUM DEPTH (OD)
				WIDTH (OW)		HEIGHT (OH)		
				MIN	MAX	MIN	MAX	
GI-29	28 1/2"	22 5/8"	8 3/4"	26 1/8"	N/A	21"	N/A	8 3/8"
IS-36	36 1/4"	27"	1"	26 1/8"	36"	21"	26 7/8"	N/A
IS-42	42 1/4"	28 1/2"	1"	26 1/8"	42"	21"	28 1/2"	N/A



REMOTE FEATURES

- realistic-looking flame
- ambient backlighting
- realistic ember bed lighting
- fan for heat



Affordable warmth for every space.





COMMERCIAL PRODUCTS





commercial products

We work with businesses, hotels, designers, builders, architects, and more to provide the best quality outdoor-rated products and indoor electric fireplaces.

commercially-rated electric fireplaces

Commercially-rated Gallery Collection Indoor Fireplaces by The Outdoor GreatRoom Company™ are a great, cost-effective, alternative to wood burning or gas fireplaces. Put in any commercial space for instant ambiance. These units are CSA tested for safety and require minimal installation— saving time and money. Perfect for multi-family residences, restaurants, hotels, office spaces, and more. Visit outdoorrooms.com/Commercial to get more information regarding our commercial services.



Model GE-94 at Paradise Landing Restaurant, Balsam Lake, WI

commercially-rated outdoor products

Commercially-rated outdoor products by The Outdoor GreatRoom Company™ include gas burners, fire pits, fire tables, and outdoor kitchens. Both standard and custom products can be commercially-rated and include added safety features. All fire products use our UL listed Crystal Fire™ Burner. Perfect for multi-family residences, hotels, sports stadiums, restaurants, and more. We strive to deliver the best product for your commercial setting and professional customer service before, during, and after your commercial project. Visit outdoorrooms.com/Commercial to get more information regarding our commercial services.



Uptown Fire Table at Hampton Inn Hotel, Williamsport, PA



Custom Outdoor Kitchen & Custom Fire Table at CBS news affiliate WCCO, Minneapolis, MN



TEMPERED GLASS



Tempered glass is used for all Glass Wind Guards and Glass Fire Media. It has been heat-treated and is safe to use with our Crystal Fire™ Burners. Untempered glass or glass that has not been heat treated can explode when it reaches high temperatures and is not safe to use with gas fire tables.

SUPERCAST



Supercast is a proprietary blend of fiber glass and concrete to provide durability and strength. It is stronger and weighs less than traditional concrete. We have a variety of standard colors and finish looks including Mocha, Marbleized Noche, Polished Brown, Polished Midnight Mist, Artisan Acid Wash, White Onyx and Barnwood. Custom options available.

LAVA ROCK



Lava Rock is a naturally produced material and is an additional fire media that can be used in our Crystal Fire™ Burners.

GRANITE



Granite, a popular choice for its durability, strength, and beauty, is available as an option for several fire tables in both solid pieces and tiles.

STAINLESS STEEL



Crystal Fire™ Burners, Outdoor Kitchen Accessories, and the Legacy Electric Grill are made from high quality #304 stainless steel. #304 stainless steel is a high quality commercial grade metal.

VINYL FABRIC



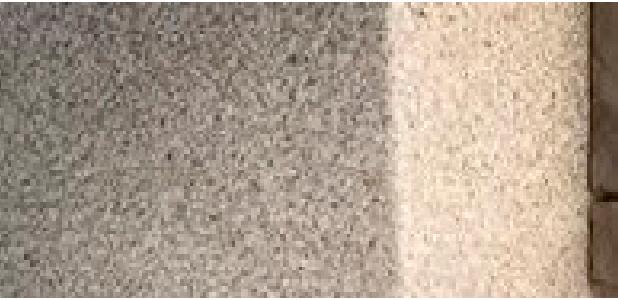
Vinyl fabric is used for many of our fire table and fireplace covers. It is heavy duty, yet lightweight and will protect your investment from the outdoor elements.

FIBER CEMENT BOARD



Fiber cement board is used to build many of our fire tables, fire pits, outdoor fireplaces, and custom outdoor kitchens. Fiber cement board is non-combustible and resistant to mold and mildew which makes it ideal for outdoor applications.

STUCCO



Stucco is used on many of our outdoor products and comes in many colors and finishes. Stucco is a low maintenance and durable finish.

STEEL FRAMING



Steel framing is used to build many of our fire tables, fire pits, outdoor fireplaces, and custom outdoor kitchens. The framing is G90 marine grade galvanized stainless steel that is rust resistant.

WOOD



Douglas Fir is used for the Sonoma and Lodge II pergolas. Architects and engineers consistently look to use Douglas Fir as a structural lumber for its dimensional stability and superior strength-to-weight ratio. Cedar is used for accents on several fire pits & fire tables. Salvaged Ponderosa Pine is used for the wood beams on the Tuscany-WB-K Pergola.



CRYSTAL FIRE™ BURNERS

Where can I use my Crystal Fire™?

These burners are used in all OGC outdoor fire pit tables and fire pits. These burners can be purchased separately as well as for your own DIY project.

Are these burners UL listed? What does that mean?

Yes all of our burners are UL tested and listed. This means they have passed numerous tests to ensure safe operation. They have undergone wind, rain and clearance tests.

Are there different Crystal Fire™ models?

We have a few different Crystal Fire™ Burners and over 50 Fire Pit Tables in stock. Many of these can be purchased as one complete unit or individual components can be purchased. Custom fire pit tables & burners are also available. See the Crystal Fire™ section of the catalog for a complete list of burners, sizes, colors, etc.

If I purchase a Crystal Fire™ Burner for my own project, what else is needed?

Depends on the project. More than likely you will need to purchase a standard control panel, key valve, timer, or automatic ignition, this will allow for easier access to operate your burner from the outside. You may also need to specify the fuel source (LP or NG) used if it is a large or custom burner. We recommend working with your local OGC dealer to determine what is needed for your project.

Is media included with the Crystal Fire™ Burners?

Yes, we include Crystal Fire™ Gems, diamond color with each Crystal Fire™ Burner (some exceptions on DIY burners, custom burners, etc). The glass used is a heat-tempered-tumbled glass gem.

How many BTUs per hour are produced?

60,000 BTUs are produced per hour, LP or NG on the CF-20 & CF-1224. The CF-2424 & CF-1242 produce 90,000 BTU's per hour. Some of our larger burners like the CF-30 or CF-1242-L can produce 110,000 BTUs and more. The WV-56-BLK produces 150,000 BTU's.

Can I roast marshmallows on my Crystal Fire™?

Yes you can, however this appliance has UL Listed as a decorative gas appliance not a cooking appliance. Also make sure that combustible items do not end up on the burner top, as it will clog the burner ports and prevent a proper burn.

What type of fuels can I use?

You can choose from either LP – Liquid Propane, or NG – Natural Gas. The Crystal Fire™ unit comes set-up for LP, however there is NG conversion kit that comes with the unit.

FIRE TABLES & FIRE PITS

Can I use my OGC fire table on a wood deck?

Yes, all OGC fire pits & fire tables are ok to use on a wood deck if clearances are met. OGC Crystal Fire™ Burners are UL tested and listed. These burners are used in all of our outdoor fire pits. They are ok to use on concrete patios, wood decks, composite decks, etc.

Can they operate on propane or natural gas?

Yes, they can be operated on either fuel source. The majority of our fire tables come all set up for use with propane and do include a natural gas orifice that can be converted in the field. If converting to NG, a certified gas technician should do the installation. Some of our larger BTU burners and custom burners need to be specified for either LP or NG use. Please contact OGC for specific skus.

When I push in the black sparker I don't hear any sound?

Be sure to put in a AAA battery, + side facing out into the black sparker box. The push button can be unscrewed and the battery slid in. Connect the two wires running from the burner and you should hear the sparker and see a blue spark at the electrode.

Is media included with the fire tables?

Yes, we include Crystal Fire™ Gems, diamond color with each Crystal Fire™ Burner (some exceptions on DIY burners, custom burners, etc). The glass used is a heat-tempered-tumbled glass gem.

Is a propane tank included with my fire table?

Propane tanks are not included with purchase.

How long will a 20 lb tank last?

Typically you can operate for an average of 8 hours when burning the CF-20 or CF-1224 on high. The CF-2424 & CF-1242 will vary depending on which orifice is used.

Do I need to cover my fire table when not in use?

It is not mandatory to cover the fire table as it is designed to allow moisture to flow down through the bowl and the unit is constructed of materials to withstand outdoor exposure, however we do recommend covering if not using for extended periods as it will prevent any unwanted debris from falling onto the burner bowl. There are optional vinyl covers available.

What happens when it rains?

If the fire table is uncovered, water will drain through the gas port holes in the burner, into the burner neck below and out by the air shutter.

Water will not build up in the burner, it will drain out the bottom.

PERGOLAS

Do I need to re-stain my pergola?

The wood is prefinished with stain containing UV inhibitors, which slows down fading. We suggest restaining as needed. Each wood piece is hand dipped into the stain allowing the stain to penetrate the wood.

Does it need to be fastened down?

All pergolas come with fastening devices and fastening is recommended. Pergolas that are not fastened are void of any warranty. See manual for suggested way to fasten to patio or deck.

Are there custom pergola options available?

No, we do not take custom pergola requests.

LEGACY ELECTRIC GRILL

Is this safe to be set on a countertop?

Yes, it can be set on a hard countertop. It has elevated feet on it so it does not sit directly on the countertop.

Should the hood be open or closed during cooking?

In order to make the most efficient use of the heat available, it is recommended that the hood be closed whenever possible.

Do you have to use the Cook Number® system?

You do not have to always use the Cook Number® system, the grill can be operated without it.

How much does it cost to operate?

The high efficiency design allows it to operate for 10-15 cents per hour. A typical gas grill of 60,000 BTUs will cost 10-20 times this to operate.

CUSTOM OUTDOOR KITCHENS

What is the design and ordering process?

Start by completing the custom outdoor kitchen request form from either our catalog or website. From here we will communicate throughout the process on pricing and revisions. The entire process can be completed in 6 weeks once everything is approved.

What type of grills can be built in?

Any grill that has the appropriate installation kit or specifications can be used. This includes gas, charcoal, wood and pellet.

Can I order a custom finish to match my home?

Yes, you can also order the unit unfinished, and have it finished on-site to match your house and landscape by your local dealer, contractor or landscaper.

What are the Outdoor Kitchens built from?

The structure begins with G90 (Marine Grade) galvanized framing. It is then wrapped in fiber cement board. From there it is either in maintenance-free stucco, tile and/or Supercast counter tops or left unfinished to be completed on-site.

What type of maintenance is required?

- Stucco Siding – Clean as needed
- Tile Counter Tops – Re-seal grout annually
- Supercast Countertops – Re-seal annually or as needed
- Interior – Clean as needed

FURNITURE

How do I clean the fabric?

Most stains can be cleaned with mild soap and warm water. Blot the affected area and try to remove the stain with the cleaning mixture. For more detailed instructions, please visit www.sunbrella.com.

Do I need to store my cushions from the rain and/or winter?

The furniture is built to withstand a variety of weather conditions. You can choose to store them inside if you prefer that they are clean and dry to use.

Is the furniture rust-resistant?

Yes, due to the complete powder-coating process on the frames.

OUTDOOR FIREPLACES

What type of burner is in the fireplace?

The CF-1224 burner comes in every unit and is a UL listed burner. This includes both LP and NG orifices along with the clear glass gems. If desired, an optional log set and lava rock can be ordered.

Can I burn wood in any of these fireplaces?

No. These units are not wood burning fireplaces. The benefits of a gas fireplace include a smoke-free experience, instant on and instant heat.

Is the unit approved for use in screened porches, gazebos, and lanais?

The unit itself is not UL approved for this application, but there should not be any problem provided the following guidelines are followed:

- Minimum porch area: 96 square feet
- Minimum ceiling height: 92 inches
- Minimum of two walls must be screened
- Minimum top of screen height side walls: 6 ft. 8 in.
- Minimum screen area: 64 square feet

GALLERY INDOOR FIREPLACES

What is the cost to operate the electric fireplace units?

Based on the 2012 national average electricity costs, the cost to operate the flame and lights is less than one penny per hour. The cost to operate the heater is about 9 cents per hour on low (750 watts) and 18 cents per hour on high (1500 watts).

How much heat will the electric fireplaces put out?

The heat output on high is about 5,000 BTUs/hour

Are the electric fireplace units quiet?

Yes. They have a lightweight composite shaft for the fan/blower making it very quiet.

How big of a room will the electric fireplaces heat?

While there are many factors to consider (insulation, outdoor temperatures, openness of the room, etc.), 5,000 BTUs should be adequate to heat a room that is about 10 x 20 feet (200 square feet) with an eight foot ceiling.

What happens if we leave the flame on the electric fireplaces?

The unit is under warranty for 10,000 hours (400 days +). There is a safety mechanism that prevents over heating if the heater is left on for extended periods. If you operate the fireplace for 4 hours a day the LED lights should last at least six years.

Do all of the units come with a full featured remote control?

Yes. The remote controls the flame setting, heat and thermostat.

Can the electric fireplace units be installed in a bathroom?

Yes. It should be located away from a wet/splash zone and away from direct steam.

For more information visit outdoorrooms.com/support-faq/



With our Minnesota based customer service, design, engineering and manufacturing abilities we can help you to design, build and deliver the custom project you’ve been dreaming up. The process is simple and includes steps to ensure we do everything correct.

CUSTOM PROCESS STEPS

- Start with something as basic as a sketch. It can be something completely new or simply a dimension or material change to one of the many items in our catalog
- Use one of the following forms provided, make a photocopy and fill out as completely as possible. The more information we have in advance the better.
- Outdoor GreatRoom will provide an estimate for the project.
- If the estimate is approved the Design and Engineering team will dedicate time and resources to the design.
- Once a rendered drawing is complete OGC will submit that back for approval.
- Revisions can be discussed and made at this time.
- Once everything is approved a signed drawing and corresponding purchase order is submitted to OGC to start the process.

Custom Outdoor Kitchen Request

Please provide a drawing of your custom request either below or on a separate page.

Drawing should include the overall shape. Kitchen drawn from multiple angles if possible, and all desired dimensions (LxWxH).

Outdoor Kitchen Style:

☐ Flat Counter ☐ Backsplash ☐ Countertop Overhang ☐ Elevated Back Bar

Accessory Options:

☐ Grill Brand, Model and Cut-Out Dimensions _____
☐ Crystal Fire Burner _____
☐ Doors, Drawers and More ☐ 27DAD ☐ 30DAD ☐ 17SNG-LV ☐ 17SNG-LH ☐ Combo CD2DRW ☐ TRASHTO
☐ 3RDW ☐ 2DRW ☐ 1DRW ☐ ICEDRW ☐ SDBRNR ☐ DAR125SLDD ☐ SINK ☐ RADIO/MP3 ☐ PUCK-LED
☐ LED-STRIP ☐ FRIDGE-TK ☐ OUTLET (List Qty) ☐ Other Accessories _____
☐ Other Accessories _____

Material Options:

TOP Materials: (Please select a material for the top of your fire pit and provide any additional notes)
Tile Styles: ☐ SanJani ☐ Goldland ☐ Black Granite ☐ Tumbled Marble (Cream or Noche) _____
☐ Slate (Autumn Mist or Indian Multicolor) _____
Supercast: ☐ Mocha ☐ Marbleized Noche ☐ White Onyx ☐ Ground Brown ☐ Midnight Mist
☐ Artisan Acid Wash ☐ Pine Ridge Barnwood
Describe top (Edge thickness, edge style, etc.) _____
☐ Finish-ready (Describe material and thickness) _____

Material Options:

BASE Materials: (Please select a material for the base of your fire pit and provide any additional notes)
Stucco Color: ☐ Morning Mist ☐ Stonay Creek ☐ Van Dyke ☐ Napa Valley Brown
☐ Finish ready (Describe material and thickness) _____
Custom Color/Material: _____

Custom Fire Table/Feature Request

Please provide a drawing of your custom request.

Drawing should include the overall shape. Fire pit drawn from multiple angles if possible, and all desired dimensions (LxWxH). Feel free to attach separate

Burner Options:

☐LP ☐Natural Gas

Select a burner for your fire pit and let us know if you have any additional requests related to the burner.

☐CF-20 (20" round) ☐CF-1224 (12x24" rectangular) ☐CF-2424 (24" square) ☐CF-1242 (12x42" linear) ☐CF-1264 (12x64" linear) ☐CF-12 (12" round) ☐CF-30 (30" round)

☐Custom Length or shape: _____
Provide details or drawing with Custom Burner Request Form
<http://www.outdoorrooms.com/greatroom-ideas/design-tools/>

Material Options:

TOP Materials- (Please select a material for the top of your fire pit and provide any additional notes.

☐Tile: ☐Autumn Mist Slate ☐Indian Multi Color Slate ☐Tumbled Marble: Cream or Noche (Circle one)
☐Continental Slate

☐Supercast: ☐Mocha ☐Marbleized Noche ☐White Onyx ☐Ground Brown ☐Midnight Mist
☐Artisan Acid Wash ☐Barnwood ☐Marbleized Mocha

Describe top (Edge thickness, edge style, ect.) _____

☐Unfinished for you to finish yourself (steel framing + fiber cement board)

☐Other Custom color/material _____

Material Options:

BASE Materials- (Please select a material for the base of your fire pit and provide any additional notes.)

☐Stucco: ☐Morning Mist ☐Stony Creek ☐Van Dyke ☐Napa Valley Brown ☐Serengeti ☐Key Largo Black
☐Ridge Brown

☐Metal: ☐Black ☐Architectural Bronze ☐Sedona Brown

☐Unfinished (steel framing + fiber cement board) ☐Other Custom color/material _____

☐Access Door

Additional Notes:

Custom Burner Request Form



Date ____/____/____

Company _____ Phone _____ Fax _____

Customer Name _____

Email _____

Please provide drawing of your custom burner request:

Drawing should include the overall shape. Burner drawn from multiple angles if possible, and all desired dimensions (LxWxH). Feel free to attach separate sheet.

Additional Notes:

Burner Shape: ____linear ____square ____round ____"L" shape ____other

If linear, OGC suggests : ____CF-1248 ____CF-1264 ____CF-1274 ____CF-1284 ____CF-1296 ____CF-12108 ____CF-12120

Overall Burner Dimensions: ____standard width (13 1/2" overall) ____custom width (If not standard, what is the desired width? ____Length

Ignition: ____Battery Spark Igniter ____Automatic Ignition
IF BATTERY SPARK IGNITER: ____Push Button/Turn Knob ____Key Valve ____Timer

Gas Type: ____LP ____Natural Gas (If natural gas what is the length of gas line? ____)

What is the estimated distance from middle of burner to control panel? _____ (standard groundwire/electrode leads are 18")

Material: ____Stainless Steel Finish ____Color Coated Burner (Circle One: Black, Honey Glow Brown, Red, Pewter, Copper)

Mounting: ____Top Mount ____Recessed

Control Panel Type: ____Black (6.25x6.25") ____Brown (6.25x6.25") ____DIY Black (9.5" L x Expandable 3-4.5" H)

Safety Tested: ____Standard UL Listing ____UL Field Test ____Not required to be UL listed

Fire Media: ____Glass ____Lava Rock ____Log Set

Anticipated Lead Time for Project _____

Estimated Budget _____

Additional Requests: _____

*Linear/Rectangular burners must be a minimum of 13.5" wide and maximum of 10' long to maintain UL listing on single ignition control.

*Certified Gas Technician should be consulted on installation. *Flame height is 8-14"

*Burners are tested and designed at standardized pressure: 7 inch water column NG / 11 inch water column LP



FIRE TABLES	ACCESSORIES																																											
	CF20-LOG SET	CFP42-K5 (Ice Bowl)	CFP42-TC-GLASS (Glass Top LP Tank Cover)	CFP42-TCGR-K (Granite Top LP Tank Cover)	KV-CP-BLK (Key Valve)	LAV-BK (Lava Rock)	LAZY SUSAN RING	SC-SEALER	TIMER-CONTROL- PANEL	TT-BLK (Tank Trolley)	VINYL COVERS	CVRCF23	CVRCF2737	CVRCF2754	CVRCF36	CVRCF42	CVRCF44	CVRCF48	CVRCF50	CVRCF5151	CVRCF6030	CVRCF6132	CVRCF-BRDWLK	CVR-KL	CVRCF-PT	CVR-TANK	CVR-UPT	GLASS GUARDS	GLASS GUARD-1224	GLASS GUARD-2424	GLASS GUARD-1242	GLASS GUARD-1242-L	GLASS GUARD-20	GLASS GUARD-20-R	GLASS GUARD-30-R	GLASS BURNER COVERS	1224-BRONZE- GLASS-COVER	1224-GREY- GLASS-COVER	1242-BRONZE- GLASS-COVER	1242-GREY- GLASS-COVER	2424-BRONZE- GLASS-COVER	2424-GREY- GLASS-COVER	CFT-GLASS	
LINEAR																																												
ART-1224-BRN					x	x		x	x					x																x								x	x					
ART-1224-BRN-C					x	x		x	x					x																x								x	x					
BOARDWALK					x	x		x	x														x							x								x	x					
KL-1242-BRN					x	x		x	x					x																			x						x	x				
KL-1242-MM					x	x		x	x					x																			x						x	x				
KL-1242-SS					x	x			x															x									x					x	x					
MCR-1242-BLK-K (includes grey glass burner cover)					x	x			x												x												x						x	x				
MG-1242-BLK-K (includes grey glass burner cover)					x	x			x	x											x												x						x	x				
MG-1242-BLSM-K (includes grey glass burner cover)					x	x			x	x											x												x						x	x				
PR-1242 (includes matching supercast burner cover)					x	x		x	x													x											x							x	x			
PR-1242BRN (includes matching supercast burner cover)					x	x		x	x													x											x							x	x			
SL-1224-M (includes matching supercast burner cover)					x	x		x	x																				x									x	x					
UPT-1224					x	x		x	x																			x		x								x	x					
UPT-1242					x	x		x	x																			x					x							x	x			
UPT-1242-BRN					x	x		x	x																			x					x							x	x			
RECTANGULAR																																												
GS-1224-BRN-K					x	x			x									x												x								x	x					
GS-1224-BLK-K					x	x			x									x												x								x	x					
NAPLES-CT-B-K (includes CFT-GLASS burner cover)	x	x			x	x	x		x									x																x	x									x
NV-1224-BRN-K					x	x			x									x												x								x	x					
NV-1224-BLK-K					x	x			x									x												x								x	x					
PROV-1224-SS					x	x			x				x																	x								x	x					
PROV-1224-MNB-K					x	x		x	x				x																	x								x	x					
PROV-1224-WO-K					x	x		x	x				x																	x								x	x					

FIRE TABLES	ACCESSORIES		CF20-LOG SET	CFP42-K5 (Ice Bowl)	CFP42-TC-GLASS (Glass Top LP Tank Cover)	CFP42-TCGR-K (Granite Top LP Tank Cover)	KV-CP-BLK (key Valve)	LAV-BK (Lava Rock)	LAZY SUSAN RING	SC-SEALER	TIMER-CONTROL- PANEL	TT-BLK (Tank Trolley)	VINYL COVERS	CVRCF23	CVRCF2737	CVRCF2754	CVRCF36	CVRCF42	CVRCF44	CVRCF48	CVRCF50	CVRCF5151	CVRCF6030	CVRCF6132	CVRCF-BRDWLK	CVR-KL	CVRCF-PT	CVR-TANK	CVR-UPT	GLASS GUARDS	GLASS GUARD-1224	GLASS GUARD-2424	GLASS GUARD-1242	GLASS GUARD-1242-L	GLASS GUARD-20	GLASS GUARD-20-R	GLASS GUARD-30-R	GLASS BURNER COVERS	1224-BRONZE-GLASS-COVER	1224-GREY-GLASS-COVER	1242-BRONZE-GLASS-COVER	1242-GREY-GLASS-COVER	2424-BRONZE-GLASS-COVER	2424-GREY-GLASS-COVER	CFT-GLASS							
SQUARE																																																				
NV-2424-BRN-K			x				x	x			x											x																					x	x								
NV-2424-BLK-K			x				x	x			x											x																					x	x								
PR-2424 (includes matching supercast burner cover)			x				x	x		x	x								x																								x	x								
PR-2424BRN (includes matching supercast burner cover)			x				x	x		x	x								x																								x	x								
SIERRA-2424-M-K (includes matching supercast burner cover)			x				x	x		x	x								x																								x	x								
VNG-2424BRN			x				x	x			x											x																					x	x								
ROUND																																																				
AC-48-DIN-K (includes matching supercast burner cover)			x	x			x	x	x	x	x																																									
AC-48-K (includes matching supercast burner cover)			x	x			x	x	x	x	x										x																															
AC-48-PUB-K (includes matching supercast burner cover)			x	x			x	x	x	x	x																																									
CFT-POD-K (includes CFT-GLASS burner cover)			x	x	x	x	x	x	x		x			x															x																							
CFP42-K (includes matching Granite Lazy Susan burner cover)			x	x	x	x	x	x			x							x											x																							
CM-48-DIN-K (includes matching supercast burner cover)			x	x			x	x	x	x	x																																									
CM-48-PUB-K (includes matching supercast burner cover)			x	x			x	x	x	x	x																																									
COLONIAL-48-M-K (includes matching supercast burner cover)			x	x			x	x	x	x	x										x																															
COL-48-MNB-K (includes matching supercast burner cover)			x	x			x	x	x	x	x										x																															
CV-30 (CF-30 Burner)			x				x	x		x	x																																									
GC-48-BLK-K (includes matching Granite Lazy Susan burner cover)			x	x			x	x			x										x																															
GC-48-DIN-K (includes matching Granite Lazy Susan burner cover)			x	x			x	x	x		x																																									
GC-48-PUB-K (includes matching Granite Lazy Susan burner cover)			x	x			x	x	x		x																																									
GLASS-42-K (includes CFT-GLASS burner cover)			x	x	x	x	x	x	x		x							x											x																							
GRAND-COLONIAL-48-K (includes matching Granite Lazy Susan burner cover)			x	x			x	x			x										x																															
MNB-48-DIN-K (includes matching supercast burner cover)			x	x			x	x	x	x	x																																									
MNB-48-PUB-K (includes matching supercast burner cover)			x	x			x	x	x	x	x																																									
SF-32-K (NF-16 Burner)								x									x																																			
WOW																																																				
MARQUEE (includes textured glass burner cover)							x	x		x	x																																									
PT-1242-MM							x	x		x	x																	x																								
WV-56 (includes custom glass guard)							x			x	x																																									



ITEM NUMBER	ITEM DESCRIPTION	MSRP
FIRE TABLES		
Linear		
BOARDWALK	Boardwalk Fire Table w/white onyx supercast top, faux-wood decking top, black metal base & CF-1224. Burner cover not included	\$3,199.00
ART-1224-BRN	Artisan Fire Table w/artisan acid washed supercast top, serengeti stucco base & CF-1224. Burner cover not included	\$1,999.00
ART-1224-BRN-C	Artisan Fire Table w/artisan acid washed supercast top, serengeti stucco base & CF-1224-COP. Burner cover not included	\$2,149.00
KL-1242-BRN	Key Largo Fire Table w/ polished brown supercast top, serengeti stucco base & CF-1242. Burner cover not included	\$2,099.00
KL-1242-MM	Key Largo Fire Table w/ polished midnight mist supercast top, key largo black stucco base & CF-1242. Burner cover not included	\$2,099.00
KL-1242-SS	Key Largo Fire Table w/SS top, key largo stucco base & CF-1242. Burner cover not included	\$1,499.00
MCR-1242-BLK-K	Monte Carlo Fire Table w/black glass top, black metal base, glass burner cover & CF-1242.	\$1,999.00
MG-1242-BLK-K	Montego Fire Table w/black glass top, black wicker base, glass burner cover & CF-1242	\$1,799.00
MG-1242-BLSM-K	Montego Fire Table w/black glass top, balsam wicker base, glass burner cover & CF-1242	\$1,799.00
PR-1242	Pine Ridge Fire Table w/barnwood top, ridge brown stucco base w/wood corners, burner cover & CF-1242	\$2,299.00
PR-1242BRN	Pine Ridge Fire Table w/barnwood top, ridge brown stucco base w/wood corners, burner cover & CF-1242-BRN	\$2,399.00
SL-1224-M	Sierra Fire Table w/mocha supercast top, faux ledgerstone base, burner cover & CF-1224.	\$2,299.00
UPT-1224	Uptown Black Fire Table w/black granite tile top, polished midnight mist supercast top, morning mist stucco base & CF-1224 burner. Burner cover not included	\$3,199.00
UPT-1242	Uptown Black Fire Table w/black granite tile top, polished midnight mist supercast top, morning mist stucco base & CF-1242 burner. Burner cover not included	\$3,399.00
UPT-1242-BRN	Uptown Brown Fire Table w/sanjani porcelain tile top, polished brown supercast top, stony creek stucco base & CF-1242 burner. Burner cover not included.	\$3,299.00
Rectangular		
GS-1224-BLK-K	Grandstone Fire Table w/absolute black granite top, black metal base & CF-1224. Burner cover not included	\$2,499.00
GS-1224-BRN-K	Grandstone Fire Table w/british granite top, brown metal base & CF-1224. Burner cover not included	\$2,499.00
NAPLES-CT-B-K	Naples Coffee Table w/black glass top, balsam wicker base, glass burner cover & CF-20-LP	\$1,099.00
NV-1224-BLK-K	Napa Valley Fire Table w/absolute black drop-in granite tiles, black metal base & CF-1224. Burner cover not included	\$1,899.00
NV-1224-BRN-K	Napa Valley Fire Table w/tan porcelain drop-in tiles, brown metal base & CF-1224. Burner cover not included	\$1,699.00
PROV-1224-MNB-K	Providence Fire Table w/marbleized noche supercast top, architectural bronze metal base & CF-1224. Burner cover not included	\$1,599.00
PROV-1224-SS	Providence Fire Table w/stainless steel top, black metal base & CF-1224. Burner cover not included	\$999.00
PROV-1224-WO-K	Providence Fire Table w/white onyx supercast top, black metal base & CF-1224. Burner cover not included	\$1,699.00
Square		
NV-2424-BLK-K	Napa Valley Fire Table w/absolute black drop-in granite tiles, black metal base & CF-2424. Burner cover not included	\$2,099.00
NV-2424-BRN-K	Napa Valley Fire Table w/tan porcelain drop-in tiles, brown metal base & CF-2424. Burner cover not included	\$1,999.00
PR-2424	Pine Ridge Fire Table w/barnwood top, ridge stucco base w/wood corners, burner cover & CF-2424.	\$2,399.00
PR-2424BRN	Pine Ridge Fire Table w/barnwood top, ridge stucco base w/wood corners, burner cover & CF-2424-BRN.	\$2,499.00
SIERRA-2424-M-K	Sierra Fire Table w/mocha supercast top, faux ledgerstone base, burner cover & CF-2424.	\$2,399.00
VNG-2424BRN	Vintage Fire Table w/faux-wood tile top, distressed wood base & CF-2424-BRN. Burner cover not included	\$2,799.00

ITEM NUMBER	ITEM DESCRIPTION	MSRP
Round		
AC-48-DIN-K (Dining Height)	Colonial Dining Table w/artisan acid washed supercast top, colonial dining base, burner cover & CF-20-LP	\$2,499.00
AC-48-K	Colonial Fire Table w/artisan acid washed supercast top, colonial chat base, burner cover & CF-20-LP	\$2,299.00
AC-48-PUB-K (Pub Height)	Colonial Pub Table w/artisan acid washed supercast top, colonial pub base, burner cover & CF-20-LP	\$3,299.00
CFP42-K	Chat Fire Table w/4 piece british granite top, lazy susan burner cover & CF-20-LP	\$1,499.00
CFT-POD-K	Tri-Pod w/glass burner cover & CF-20-LP	\$499.00
CM-48-DIN-K (Dining Height)	Colonial Dining Table w/mocha supercast top, colonial dining base, burner cover & CF-20-LP	\$2,149.00
CM-48-PUB-K (Pub Height)	Colonial Pub Table w/mocha supercast top, colonial pub base, burner cover & CF-20-LP	\$2,949.00
COL-48-MNB-K	Colonial Fire Table w/marbleized noche supercast top, colonial chat base, burner cover & CF-20-LP	\$2,199.00
COLONIAL-48-M-K	Colonial Fire Table w/mocha supercast top, colonial chat base, burner cover & CF-20-LP	\$1,949.00
CV-30	Cove Fire Pit w/natural grey contemporary concrete finish & CF-30.	\$1,799.00
GC-48-BLK-K	Colonial Fire Table w/absolute black granite 4 piece top, black colonial chat base, lazy susan burner cover & CF-20-LP	\$2,399.00
GC-48-DIN-K (Dining Height)	Colonial Dining Table w/british granite 4 piece top, colonial dining base, lazy susan burner cover & CF-20-LP	\$2,499.00
GC-48-PUB-K (Pub Height)	Colonial Pub Table w/british granite 4 piece top, colonial pub base, lazy susan burner cover & CF-20-LP	\$3,299.00
GLASS-42-K	Black Glass Fire Table w/black glass top, burner cover & CF-20-LP	\$799.00
GRAND-COLONIAL-48-K	Colonial Fire Table w/british granite 4 piece top, colonial chat base, lazy susan burner cover & CF-20-LP	\$2,299.00
MNB-48-DIN-K (Dining height)	Colonial Dining Table w/marbleized noche supercast top, colonial dining base, burner cover & CF-20-LP	\$2,399.00
MNB-48-PUB-K (Pub Height)	Colonial Pub Table w/marbleized noche supercast top, colonial pub base, burner cover & CF-20-LP	\$3,199.00
SF-32-K	Stonefire Fire Table w/stonefire top, dora brown mesh base, burner cover & NF-16-RD	\$799.00
Wow		
MARQUEE (Pub Height)	Marquee Pub Table w/marbleized mocha supercast top, faux ledgerstone panels, douglas fir wood panels, 2 textured glass accents, glass burner cover & NF-7X19 burner	\$4,499.00
PT-1242-MM	The Pointe Fire L-Shaped table w/polished midnight mist supercast top, black key largo stucco base & CF-1242-L	\$4,699.00
WV-56	Wave Fire Table w/polished midnight mist supercast top, black stucco base, aluminum leg & WV-56-BLK-DIY. Includes glass guard and black onyx glass gems	\$5,499.00
OUTDOOR GAS FIREPLACES		
CF-1224 LOG SET	Log set with grate, lava rock for CF-1224 burner in OGC fire places	\$399.00
CVR-SAFP-T	Tan vinyl cover for SAFP-1224	\$69.00
SAFP-1224	Stone Arch Fireplace Surround w/marblelized noche supercast top, fire box, hearth pad, stony creek stucco & CF-1224	\$2,999.00
SANJUANFP-1224-K	SanJuan Fireplace Surround w/mocha supercast top, fire box, hearth pad, stony creek stucco & CF-1224	\$3,999.00
SONFS42-M	Sonoma Fireplace Surround w/mocha supercast top, mantel, fire box, hearth pad, stony creek stucco & CF-1224 Burner	\$4,999.00
CRYSTAL FIRE BURNERS		
CF-12-DIY	12" Round Crystal Fire SS Burner w/diamond crystal fire gems (5lbs) Includes hose & regulator, gas valve, metal flex hose, LP/NG orifice, electronic piezo	\$329.00
CF-1224-BLK	12" X 24" Rectangular Crystal Fire Black Burner w/diamond crystal fire gems (10lbs). Includes hose & regulator, gas valve, metal flex hose, LP/NG orifice, electronic piezo	\$599.00
CF-1224-BRN	12" x 24" Rectangular Crystal Fire Honey Glow Brown Burner w/Glass Fire Gems (10lbs). Includes hose & regulator, gas valve, metal flex hose, LP/NG orifice, electronic piezo	\$599.00

ITEM NUMBER	ITEM DESCRIPTION	MSRP
CF-1224-COP	12" X 24" Rectangular Crystal Fire Copper Burner w/diamond crystal fire gems (10lbs). Includes hose & regulator, gas valve, metal flex hose, LP/NG orifice, electronic piezo	\$599.00
CF-1224-DIY	12" x 24" Rectangular Crystal Fire SS Burner w/diamond crystal fire gems (10lbs). Includes hose & regulator, gas valve, metal flex hose, LP/NG orifice, electronic piezo	\$499.00
CF-1224-PTR	12" X 24" Rectangular Crystal Fire Pewter Burner w/diamond crystal fire gems (10lbs). Includes hose & regulator, gas valve, metal flex hose, LP/NG orifice, electronic piezo	\$599.00
CF-1224-RED	12" x 24" Rectangular Crystal Fire Shimmering Rose Red Burner w/diamond crystal fire gems (10lbs). Includes hose & regulator, gas valve, metal flex hose, LP/NG orifice, electronic piezo	\$599.00
CF-1242-BLK	12" X 42" Linear Crystal Fire Black Burner w/diamond crystal fire gems (15lbs). Includes 2-90K BTU orifices for LP/NG, hose & regulator, gas valve, metal flex hose, electronic piezo	\$749.00
CF-1242-BRN	12" x 42" Linear Crystal Fire Honey Glow Brown Burner w/diamond crystal fire gems (15lbs). Includes 2-90K BTU orifices for LP/NG, hose & regulator, gas valve, metal flex hose, electronic piezo	\$749.00
CF-1242-COP	12" X 42" Linear Crystal Fire Copper Burner w/diamond crystal fire gems (15lbs). Includes 2-90K BTU orifices for LP/NG, hose & regulator, gas valve, metal flex hose, electronic piezo	\$749.00
CF-1242-DIY	12" x 42" Linear Crystal Fire SS Burner w/diamond crystal fire gems (15lbs). Includes 2-90K BTU orifices for LP/NG, hose & regulator, gas valve, metal flex hose, electronic piezo	\$649.00
CF-1242-L-DIY	2 - 12" X 42" Crystal Fire SS Burners in an L shape w/diamond crystal fire gems (30lbs). Includes 2-110K BTU orifices for LP,NG, hose & regulator, gas valve, metal flex hoses, electroneice piezo	\$1,299.00
CF-1242-PTR	12" x 42" Linear Crystal Fire Pewter Burner w/diamond crystal fire gems (15lbs). Includes 2-90K BTU orifices for LP/NG, hose & regulator, gas valve, metal flex hose, electronic piezo	\$749.00
CF-1242-RED	12" X 42" Linear Crystal Fire Shimmering Rose Red Burner w/diamond crystal fire gems (15lbs). Includes 2-90K BTU orifices for LP/NG, hose & regulator, gas valve, metal flex hose, electronic piezo	\$749.00
CF-20-BLK	20" Round Crystal Fire Black Burner w/diamond crystal fire gems (10lbs) Includes hose & regulator, gas valve, metal flex hose, LP/NG orifice, electronic piezo	\$499.00
CF-20-BRN	20" Round Crystal Fire Honey Glow Brown Burner w/diamond crystal fire gems (10lbs). Includes hose & regulator, gas valve, metal flex hose, LP/NG orifice, electronic piezo	\$499.00
CF-20-COP	20" Round Crystal Fire Copper Burner w/diamond crystal fire gems (10lbs). Includes hose & regulator, gas valve, metal flex hose, LP/NG orifice, electronic piezo	\$499.00
CF-20-LP-DIY	20" Round Crystal Fire SS Burner w/diamond crystal fire gems (10lbs) Includes hose & regulator, gas valve, metal flex hose, LP/NG orifice, electronic piezo	\$399.00
CF-20-PTR	20" Round Crystal Fire Pewter Burner w/diamond crystal fire gems (10lbs) Includes hose & regulator, gas valve, metal flex hose,LP/NG orifice, electronic piezo	\$499.00
CF-20-RED	20" Round Crystal Fire Shimmering Rose Red Burner w/diamond crystal fire gems (10lbs). Includes hose & regulator, gas valve, metal flex hose, LP/NG orifice, electronic piezo	\$499.00
CF-2424-BLK	24" X 24" Square Crystal Fire Black Burner w/diamond crystal fire gems (20lbs). Includes 2-90K BTU orifices for LP/NG, hose & regulator, gas valve, metal flex hose, electronic piezo	\$749.00
CF-2424-BRN	24" x 24" Square Crystal Fire Honey Glow Brown Burner w/diamond crystal fire gems (20lbs). Includes 2-90K BTU orifices for LP/NG, hose & regulator, gas valve, metal flex hose, electronic piezo	\$749.00
CF-2424-COP	24" X 24" Square Crystal Fire Copper Burner w/diamond crystal fire gems (20lbs). Includes 2-90K BTU orifices for LP/NG, hose & regulator, gas valve, metal flex hose, electronic piezo	\$749.00
CF-2424-DIY	24" x 24" Square Crystal Fire SS Burner w/diamond crystal fire gems (20lbs). Includes 2-90K BTU orifices for LP/NG, hose & regulator, gas valve, metal flex hose, electronic piezo	\$649.00
CF-2424-PTR	24" x 24" Square Crystal Fire Pewter Burner w/diamond crystal fire gems (20lbs). Includes 2-90K BTU orifices for LP/NG, hose & regulator, gas valve, metal flex hose, electronic piezo	\$749.00
CF-2424-RED	24" X 24" Square Crystal Fire Shimmering Rose Red Burner w/diamond crystal fire gems (20lbs). Includes 2-90K BTU orifices for LP/NG, hose & regulator, gas valve, metal flex hose, electronic piezo	\$749.00
CF-30-DIY	30" Round Crystal Fire SS Burner w/diamond crystal fire gems (25lbs) Includes hose & regulator, gas valve, metal flex hose, 110K BTU NG orifice, electronic piezo, LP orifice	\$699.00
Extra Length Burners		
CF-12120-DIY	12" X 120" Rectangular Crystal Fire Burner. Includes gas valve, metal flex hose, electronic piezo & glass fire gems (40lbs) NG/LP orifice	\$2,599.00
CF-1264-DIY	12" X 64" Rectangular Crystal Fire Burner. Includes gas valve, metal flex hose, electronic piezo & glass fire gems (20lbs) NG/LP orifice	\$1,299.00
Automatic Ignition		
CF-AI-LP	Auto Ignition System for LP fuel - 140K BTU rating, module, valve, 2 D battery operated, on/off switch built into control panel	\$699.00
CF-AI-NG	Auto Ignition System for NG fuel - 140K BTU rating, module, valve, 2 D battery operated, on/off switch built into control panel	\$699.00
CF-AI-R	Remote control for Crystal Fire AI System	\$99.00
OGR-3V-ADP	110V AC/3VDC Adapter for AI systems	\$39.00

ITEM NUMBER	ITEM DESCRIPTION	MSRP
Custom Linear Burners		Custom linear burners are available upon request. Any size available, contact OGC for a drawing & quote
DIY Crystal Fire Burners & Fire Pit Kits		
DIY-2032	Rectangular DIY Hardscape Gas Fire Pit kit. Includes 20" X 32" 4 piece burner support & hardware, electronic piezo, 60K BTU gas burner, metal flex hose, NG orifice, grounding wire w/extension, expansion control panel bracket for different block sizes, control valve w/knob. (20lbs glass recommended, 1 bag LAV-BK)	\$499.00
DIY-2049	Linear DIY Hardscape Gas Fire Pit kit. Includes 20" X 49" 6 piece burner support & hardware, electronic piezo, 90K BTU gas burner, metal flex hose, NG orifice, grounding wire w/extension, expansion control panel bracket for different block sizes, control valve w/knob. (25lbs glass recommended, 1 bag LAV-BK)	\$599.00
DIY-38	Round DIY Hardscape Gas Fire Pit kit. Includes 38" 4 piece burner support with hardware, electronic piezo, 90K BTU gas burner, metal flex hose, NG orifice, grounding wire w/extension, expansion control panel bracket for different block sizes, control valve w/knob. (30lbs glass recommended, 1 bag LAV-BK)	\$599.00
HUD-46-K	Hudson Fire Pit, 46" diameter includes 59 Hudson stone blocks, DIY-38, air vent & black lava rock	\$999.00
Drop-In Crystal Fire Burner Pans		
NF-16-RD	16" Crystal Fire burner pan. No flange edge around outside. Includes diamond crystal fire gems (10lbs), hose & regulator, gas valve, metal flex hose, LP/NG orifice, electronic piezo	\$329.00
NF-1919	19" X 19" Crystal Fire burner pan. No flange edge around outside. Includes diamond crystal fire gems (20lbs), hose & regulator, gas valve, metal flex hose, LP/NG orifice, electronic piezo	\$549.00
NF-7X19	7" X 19" Crystal Fire burner pan. No flange edge around outside. Includes diamond crystal fire gems (10lbs), hose & regulator, gas valve, metal flex hose, LP/NG orifice, electronic piezo	\$429.00
NF-7X37	7" X 37" Crystal Fire burner pan. No flange edge around outside. Includes diamond crystal fire gems (15lbs), hose & regulator, gas valve, metal flex hose, LP/NG orifice, electronic piezo	\$549.00
Wave Burners		
WV-56-BLK-DIY	Wave 56" black burner. Includes 4 metal flex hoses, 3 LP/3NG orifices, key valve control panel, 15lbs of CFG-O glass media, Wave glass guard (14.5" X 60 X 9.5" H) & clips	\$2,599.00
FIRE TABLE ACCESSORIES		
Glass Burner Covers		
1224-BRONZE-GLASS-COVER	1224 Bronze Glass Cover to be used with any fire table with a CF-1224	\$69.00
1224-GREY-GLASS-COVER	1224 Grey Glass Cover to be used with any fire table with a CF-1224	\$69.00
1242-BRONZE-GLASS-COVER	1242 Bronze Glass Cover to be used with any fire table with a CF-1242	\$89.00
1242-GREY-GLASS-COVER	1242 Grey Glass Cover to be used with any fire table with a CF-1242	\$89.00
2424-BRONZE-GLASS-COVER	2424 Bronze Glass Cover to be used with any fire table with a CF-2424	\$89.00
2424-GREY-GLASS-COVER	2424 Grey Glass Cover to be used with any fire table with a CF-2424	\$89.00
CFT-GLASS	Black glass burner cover to be used with any fire table with a CF-20	\$49.00
Glass Guards		
GG-1224-12	Glass Wind Guard for CF-1224. Includes 2 - 15 1/2" W X 12" H glass, 2 - 28 1/2" W X 12"H glass, polished aluminum clips for glass	\$349.00
GG-1242-12	Glass Wind Guard for CF-1242. Includes 2 - 15 1/2" W X 12" H glass, 2 - 44 1/2" W X 12"H glass, polished aluminum clips for glass	\$399.00
GG-2424-12	Glass Wind Guard for CF-20, 2424. Includes 4 - 28" W X 12" H glass, polished aluminum clips for glass	\$399.00
GLASS GUARD-1224	Glass Wind Guard for CF-1224. Includes 2 - 15 1/2" W X 6" H glass, 2 - 28 1/2" W X 6"H glass, polished aluminum clips for glass	\$249.00
GLASS GUARD-1242	Glass Wind Guard for CF-1242. Includes 2 - 15 1/2" W X 6" H glass, 2 - 44 1/2" W X 6"H glass, polished aluminum clips for glass	\$299.00
GLASS GUARD-20	Glass Wind Guard for CF-20. Includes 4 22" W X 6"H glass, polished aluminum clips for glass	\$249.00
GLASS GUARD-20-R	Glass Wind Guard for CF-20. Includes 4 curved glass pieces, 6" H glass, polished aluminum clips. 23" diameter	\$299.00
GLASS GUARD-2424	Glass Wind Guard for CF-2424. Includes 4 - 28" W X 6" H glass, polished aluminum clips for glass	\$299.00
GLASS GUARD-30-R	Glass Wind Guard for CF-30. Includes 5 curved glass pieces, 6" H glass, polished aluminum clips. 34.5 diameter	\$349.00
GLASS-GUARD-1242-L	Glass Wind Guard for CF-1242-L. Each glass section is 42 1/2" long x 15 1/2" wide x 6" high, polished aluminum clips for glass	\$599.00

ITEM NUMBER	ITEM DESCRIPTION	MSRP
Fire Media		
CF20-LOG SET	Log Set for the CF-20-LP, CF-1224, CF-2424 (includes lava rock)	\$149.00
CFD-B	Crystal Fire Diamonds - Small Black. 5lb container (10lbs needed for CF-20 & CF-1224, 15lbs for CF-1242, 20lbs for CF-2424)	\$149.00
CFD-D	Crystal Fire Diamonds - Small Clear. 5lb container (10lbs needed for CF-20 & CF-1224, 15lbs for CF-1242, 20lbs for CF-2424)	\$79.00
CFG-A	Crystal Fire Gems (5lb container) - Amber (10lbs needed for CF-20 & CF-1224, 15lbs for CF-1242, 20lbs for CF-2424)	\$39.00
CFG-AM	Crystal Fire Gems (5lb container) - Aqua Marine (10lbs needed for CF-20 & CF-1224, 15lbs for CF-1242, 20lbs for CF-2424)	\$39.00
CFG-D	Crystal Fire Gems (5lb container) - Diamond (10lbs needed for CF-20 & CF-1224, 15lbs for CF-1242, 20lbs for CF-2424)	\$39.00
CFG-O	Crystal Fire Gems (5lb container) - Onyx (10lbs needed for CF-20 & CF-1224, 15lbs for CF-1242, 20lbs for CF-2424)	\$39.00
CFG-R	Crystal Fire Gems (5lb container) - Ruby (10lbs needed for CF-20 & CF-1224, 15lbs for CF-1242, 20lbs for CF-2424)	\$45.00
CF-I	Crystal Fire - Ice Cubes (10lbs needed for CF-20 & CF-1224, 15lbs for CF-1242, 20lbs for CF-2424)	\$69.00
CFLD-B	Crystal Fire Diamonds - Large Black. 5lb container (10lbs needed for CF-20 & CF-1224, 15lbs for CF-1242, 20lbs for CF-2424)	\$59.00
CFLD-C	Crystal Fire Diamonds - Large Copper. 5lb container (10lbs needed for CF-20 & CF-1224, 15lbs for CF-1242, 20lbs for CF-2424)	\$79.00
CFLD-D	Crystal Fire Diamonds - Large Clear. 5lb container (10lbs needed for CF-20 & CF-1224, 15lbs for CF-1242, 20lbs for CF-2424)	\$59.00
CFP42-K5	Ice Bowl for any table w/CF-20-LP	\$89.00
CFS-B	Crystal Fire Stones - Black. 5lbs (10lbs needed for CF-20 & CF-1224, 15lbs for CF-1242, 20lbs for CF-2424)	\$49.00
CFS-DA	Crystal Fire Stones - Dark Amber. 5lbs (10lbs needed for CF-20 & CF-1224, 15lbs for CF-1242, 20lbs for CF-2424)	\$49.00
GFC-CRUSH-B	Black Reflective Glass (5lb bag) (10lbs needed for CF-20 & CF-1224, 15lbs for CF-1242, 20lbs for CF-2424)	\$59.00
GFC-CRUSH-C	Copper Reflective Glass (5lb bag) (10lbs needed for CF-20 & CF-1224, 15lbs for CF-1242, 20lbs for CF-2424)	\$59.00
LAV-BK	1.5 cubic foot bag of black natural lava rock. 2 bags recommended for use w/DIY-2032, DIY-2049, DIY-38 & CF-1242, CF-2424	\$59.00
LAV-BK-5.5	5.5lb bag of black natural lava rock. 1 bag recommended for use w/CF-20, CF-1224 Crystal Fire burners	\$32.00
Vinyl Covers		
CVRCF23	Round Vinyl cover for CFT-POD-K, 23" diameter	\$59.00
CVRCF2737	Rectangular vinyl cover for PROV-1224-SS, PROV-1224-MNB-K, PROV-1224-WO-K, 27" X 37"	\$59.00
CVRCF2754	Rectangular vinyl cover for KL-1242-MM, KL-1242-BRN, ART-1224-BRN, 27" X 54"	\$59.00
CVRCF36	Vinyl Cover for SF-32-K, 36" diameter	\$59.00
CVRCF42	Round Vinyl Cover for GLASS-42-K, CFP42-K, NIGHTFIRE-42-K. 42" diameter	\$59.00
CVRCF44	Square Vinyl Cover for SIERRA-2424-M-K, PR-2424. 44" square	\$59.00
CVRCF48	Rectangular Vinyl Cover for NV-1224-BRN, NV-1224-BLK, SIERRA-1224-M-K, GS-1224-BRN-K, GS-1224-BLK-K, NAPLES-CT-B-K. 38" X 50"	\$59.00
CVRCF50	Round Vinyl Cover for COLONIAL-48-M-K, COL-48-MNB-K, GRAND-COLONIAL-48-K, AC-48-K, GC-48-BLK-K. 50" diameter	\$59.00
CVRCF5151	Square vinyl cover for NV-2424-BRN-K, NV-2424-BLK, VNG-2424BRN. 51" square	\$59.00
CVRCF55	Round vinyl cover for table. 55" diameter	\$59.00
CVRCF6030	Rectangular vinyl cover for MG-1242-BLK-K, MG-1242-BLSM-K, MCR-1242-BLK-K. 60" X 30"	\$69.00
CVRCF6132	Rectangular vinyl cover for PR-1242, PR-1242BRN. 61" X 32"	\$69.00
CVRCF-BRDWLK	Vinyl Cover for BOARDWALK. 72" X 45"	\$99.00
CVRCF-PT	Rectangular vinyl cover for PT-1242-MM. 53" L X 26"	\$89.00
CVR-KL	Vinyl Cover for KL-1242-SS. 48" X 20"	\$59.00
CVR-TANK	Vinyl Tank Cover/Bag for 20lb LP tank	\$29.00
CVR-UPT	Vinyl Cover for UPT-1224, UPT-1242, UPT-1242-BRN. 49" X 65"	\$89.00

ITEM NUMBER	ITEM DESCRIPTION	MSRP
Other Accessories		
BF-KY-05	Black 3" key for key valves	\$29.00
CF-ESO	Gas Safety Shut Off Valve. For use with all Crystal Fire Burners, must have 110V accessible.	\$149.00
CFP42-TC-GLASS	LP Tank enclosure w/black glass top	\$279.00
CFP42-TCGR-K	LP Tank enclosure w/british granite top	\$399.00
CT-CONTROL-PANEL	DIY 6.5" X 6.5" control panel w/ gas valve. Can be used with any Crystal Fire burner	\$59.00
DIY-CONTROL PANEL-KIT	DIY expansion control panel bracket for different block sizes, control valve w/knob. Can be used with any Crystal Fire burner	\$79.00
DIY-LPK	#43 LP Orifice for 20lb LP Tank, 60,000 BTUs, 10ft propane hose & regulator	\$59.00
KV-CONTROL PANEL	6.5" X 6.5" Control Panel w/Key Valve built in. Brass Finish	\$89.00
KV-CP-BLK	6.5" X 6.5" Control Panel w/Key Valve built in. Black finish	\$149.00
LAZY SUSAN RING	Optional Lazy Susan attachment for CFT-GLASS or any round supercast cover. 20 7/8" diameter. Will elevate cover 1"	\$55.00
SC-SEALER	Supercast sealer - Everclear spray aerosol sealer	\$59.00
TIMER-CONTROL-PANEL	6.5" X 6.5" Control Panel w/Timer Valve built in	\$99.00
TT-BLK	Tank Trolley for LP Tanks. Black finish, includes pull handle	\$69.00
VENTURI SPINNING FLAME- GAS		
INT-EZ	Intrigue table top fire w/dora brown finish. Operates on 1lb LP tank	\$349.00
VENTURI SPINNING FLAME- GEL		
APOLLO-K	Apollo Table Top Fire Pit	\$149.00
HARMONY-K	Harmony Table Top Fire Pit.	\$249.00
LEDGESTONE-K	Ledgestone Table Top Fire Pit	\$149.00
SERENITY-K	Serenity Table Top Fire Pit	\$149.00
SJF-12	12 pack of Sunfuel Gel. 13oz cans	\$77.00
SJF-24	24 pack of Sunfuel Gel. 13oz cans	\$120.00
SJF-6	6 pack of Sunfuel Gel. 13oz cans	\$39.00
PERGOLAS		
LODGE II	Lodge 14 x 14 Pergola w/mocha finish, made of douglas fir, includes hardware	\$8,999.00
ROOF-METAL	Metal roof for Lodge II, Forest Green	\$699.00
SONOMA10-GP	Sonoma 10' Pergola w/mocha finish, 2 column arbor design, made of douglas fir, includes hardware	\$1,999.00
SONOMA1216-R	Sonoma 12 x 16 Pergola w/redwood finish, made of douglas fir, includes hardware (12' length is the arch)	\$4,299.00
SONOMA12-M	Sonoma 12 Pergola w/mocha finish, made of douglas fir, includes hardware	\$3,799.00
SONOMA12-M-LATT	Sonoma 12 Lattice w/mocha finish (4 pieces per box) order qty of 3 for complete roof on SONOMA 12-M, order qty 1 for complete roof for SONOMA10-GP	\$586.67
SONOMA12-M-WALL	Sonoma 12 Wall w/mocha finish, window shutters	\$1,099.00
SONOMA12-R	Sonoma 12 Pergola w/redwood finish, made of douglas fir, includes hardware	\$3,799.00
SONOMA12-R-LATT	Sonoma 12 Lattice w/redwood finish (4 pieces per box) order qty of 4 for complete roof on SONOMA1216-R, order qty 3 for complete roof for SONOMA-12-6	\$586.50
SONOMA12-R-WALL	Sonoma 12 Wall w/redwood finish, window shutters	\$1,099.00
SONOMA16-M	Sonoma 16 Pergola w/mocha finish, made of douglas fir, includes hardware	\$4,499.00
SONOMA16-M-LATT	Sonoma 16 Lattice w/mocha finish (4 pieces per box) Order Qty of 4 for complete roof on SONOMA16-M	\$599.75
SONOMA16-M-WALL	Sonoma 16 Wall w/mocha finish, window shutters	\$1,399.00
SONOMA16-R	Sonoma 16 Pergola w/redwood finish, made of douglas fir, includes hardware	\$4,499.00
SONOMA16-R-LATT	Sonoma 16 Lattice w/redwood finish (4 pieces per box) Order Qty of 4 for complete roof on SONOMA16-R	\$599.75
SONOMA16-R-WALL	Sonoma 16 Wall w/redwood finish, window shutters	\$1,399.00
TUSCANY II-COLUMN	Tuscany II Columns. Must be ordered in sets of 4. \$799 each column	\$799.00
TUSCANY-WB-K	Tuscany Pergola w/Wood Beams. Includes 4 cast concrete columns, 7 wood beams and hardware.	\$6,999.00

ITEM NUMBER	ITEM DESCRIPTION	MSRP
OUTDOOR FURNITURE		
CFP42-RCH	Chat Rocking Chairs w/tan cushions (2 per carton)	\$849.00
CFP42-RCH-P	Chat Rocking Chairs w/papaya cushions (2 per carton)	\$849.00
EMPIRE-BAR	Empire Barstools (2 per carton)	\$749.00
EMPIRE-DINE	Empire Dining Chairs (2 per carton)	\$699.00
EMP-PUB-RD-K	Empire Round Pub Table - dora brown finish, umbrella hole and adjustable base	\$449.00
EMP-PUB-SQ-K	Empire Square Pub Table - dora brown finish, umbrella hole and adjustable base	\$549.00
ES5074-C-DA	Chair w/2pc cushions in dupione aloe	\$699.00
ES5074-C-DC	Chair w/2pc cushions in dorsette cherry	\$699.00
ES5074-C-SC	Chair w/2pc cushions in spectrum cilantro	\$699.00
ES5074-G1-DA	Single Glider w/2pc cushions in dupione aloe	\$849.00
ES5074-G1-DC	Single Glider w/2pc cushions in dorsette cherry	\$849.00
ES5074-G1-SC	Single Glider w/2pc cushions in spectrum cilantro	\$849.00
ES5074-HR-DA	High Back Rocker w/1pc cushion in dupione aloe	\$549.00
ES5074-HR-DC	High Back Rocker w/1pc cushion in dorsette cherry	\$549.00
ES5074-HR-SC	High Back Rocker w/1pc cushion in spectrum cilantro	\$549.00
ES5074-L-DA	Loveseat w/4 pc. cushion in dupione aloe	\$1,199.00
ES5074-L-DC	Loveseat w/4 pc. cushion in dorsette cherry	\$1,199.00
ES5074-L-SC	Loveseat w/4 pc. cushion in spectrum cilantro	\$1,199.00
ES5074-O-DA	Ottoman w/1 pc. cushion in dupione aloe	\$379.00
ES5074-O-DC	Ottoman w/1 pc. cushion in dorsette cherry	\$379.00
ES5074-O-SC	Ottoman w/1 pc. cushion in spectrum cilantro	\$379.00
NAPLES-4030-L	Leather Wicker Bar Stool (2 per carton)	\$699.00
OUTDOOR LIGHTING		
SOLAR-2	Wall Mounting Solar lights (2 per carton)	\$119.00
GAS GRILLS & ACCESSORIES		
CNKIT24-FF	Front filler piece for 24" grill, 3" H.	\$149.00
JAG24-K	Cook Number 24" black porcelain gas grill head w/24" installation kit	\$799.00
ELECTRIC GRILLS & ACCESSORIES		
LG20I/E-2	Legacy 2 20" SS Electric Grill w/black vinyl cover	\$499.00
PBC-GRGD-K	Bistro 36" Cabinet w/british granite top and glass doors	\$749.00
SRVLGEO60	3 disposable grease trays for LG20i/e-2	\$5.00
Gas & Electric Grill Accessories		
CVR20GH	Vinyl Cover - 20" Electric Grill	\$29.00
CVR24DC	Vinyl Cover- Cart 24" Gas Grill	\$49.00
CVR24GH	Vinyl Cover- Island 24" Gas Grill Head	\$39.00
CVR36DC	Vinyl Cover- Cart 36" Gas Grill	\$49.00
NGKIT24	2008 Natural Gas Conversion Kit (#48)	\$29.00
NGKIT36	2008 Natural Gas Conversion Kit (#39)	\$29.00
CUSTOM OUTDOOR KITCHENS		
Custom outdoor kitchen islands available upon request. Contact OGC for drawing & price quote.		
Outdoor Kitchen Accessories		
17SNGL	Vertical #304 SS 17 x 24 single access door	\$299.00
17SNGL-H	Horizontal #304 SS 17 x 24 single access door	\$299.00
1DRW	SS single drawer storage	\$549.00
27DAD	SS 27" double access door	\$459.00
2DRW	SS 2 drawer storage	\$799.00
30DAD	SS 30" double access door	\$499.00
3DRW	SS 3 drawer storage	\$989.00
CD2DRW	SS combo single door 2 drawer	\$929.00

ITEM NUMBER	ITEM DESCRIPTION	MSRP
DAR125SLDD	Refrigerator Danby Glass Shelved SS	\$649.00
FRIDGE-KT	SS Fridge trim kit for DAR125SLDD	\$299.00
ICEDRW	SS ice chest drawer	\$899.00
LED-STRIP	6ft LED Strip lighting & transformer	\$269.00
MP3/RADIO	MP3 Radio Wired to 4 Speakers	\$669.00
PUCK-LED	3 wired puck lights	\$269.00
SDBRNR	SS single sideburner counter top (drop in)	\$649.00
SINK	SS sink w/single faucet	\$239.00
TRASHTO	SS trash or propane tank tilt out	\$509.00
GALLERY COLLECTION FIREPLACES		
Linear Wall Mount		
GE-50	50" Gallery Linear Electric Fireplace. Includes LED Backlighting, Heater, IR Remote, 6ft Cord, mix of large clear and copper crystal fire diamond media	\$949.00
GE-58	58" Gallery Linear Electric Fireplace. Includes LED Backlighting, Heater, IR Remote, 6ft Cord, mix of large clear and copper crystal fire diamond media	\$999.00
GE-70	70" Gallery Linear Electric Fireplace. Includes LED Backlighting, Heater, IR Remote, 6ft Cord, mix of large clear and copper crystal fire diamond media	\$1,399.00
GE-78	78" Gallery Linear Electric Fireplace. Includes LED Backlighting, Heater, IR Remote, 6ft Cord, mix of large clear and copper crystal fire diamond media	\$1,799.00
GE-94	94" Gallery Linear Electric Fireplace. Includes LED Backlighting, Heater, IR Remote, 6ft Cord, mix of large clear and copper crystal fire diamond media	\$1,899.00
GER-36	36" Gallery Radius Linear Electric LED Fireplace. Includes Heater, IR Remote, 6ft Cord, mix of large clear and copper crystal fire diamond media	\$599.00
Linear Accessories		
CFD-DB-3	Crystal Fire Diamonds - Small clear & small black mix. 3lbs for GER-36, GE-50 & GE-58	\$65.00
CFD-DB-5	Crystal Fire Diamonds - Small clear & small black mix. 5lbs for GE-70, GE-78 & GE-94	\$99.00
CFLD-DC-3	Crystal Fire Diamonds - Large clear & large copper mix. 3lbs for GER-36, GE-50 & GE-58	\$45.00
CFLD-DC-5	Crystal Fire Diamonds - Large clear & large copper mix. 5lbs for GE-70, GE-78 & GE-94	\$75.00
GE-REC-K	Side mounting bracket for GE series (to recess in 3")	\$50.00
GE-Remote	Additional/Replacement IR remote for GE & GBI fireplaces	\$89.00
Built-In Linear		
GBL-44	44" Linear Gallery Built In. Includes Heater, IR Remote, 6ft Cord, mix of large clear and copper crystal fire diamond media	\$999.00
34" Built-In		
ARF-34	Arch Rectangular Front for GBI-34 in matte black finish w/hammered silver decorative fixed doors	\$399.00
FAF-34	Full Arch Front for GBI-34 in matte black finish w/decorative gold emblem	\$339.00
GBI-34	34" X 30" Gallery Electric LED Built In fireplace. Includes heater, IR remote, 6ft cord and log fire media	\$599.00
LF-34	Louver Front for GBI-34 in matte black finish	\$149.00
41" Built-In		
ARF-41	Arch Rectangular Front for GBI-41 in matte black finish w/hammered silver decorative fixed doors	\$499.00
FAF-41	Full Arch Front for GBI-41 in matte black finish w/decorative gold emblem	\$399.00
GBI-41	41" X 35" Gallery Electric LED Built In Fireplace. Includes heater, IR remote, 6ft cord and log fire media	\$999.00
LF-41	Louver Front for GBI-41 in matte black finish	\$169.00
Built-In Cabinets		
COL-COR-RIS-K	Columbia Corner Cabinet & Riser in wood solids and veneers in cherry finish for GBI-34 w/FAF-34, ARF-34, LF-34	\$999.00
COLUMBIA CORNER TV	Columbia Corner Cabinet TV Stand in wood solids and veneers in cherry finish for GBI-34	\$199.00
RIO-34-BOOK CASE	Rio Grande book shelf cabinet in wood solids and veneers in cherry finish for GBI-34	\$349.00
RIO34-CAB-RIS-K	Rio Grande Cabinet & Base in Alder in wood solids and veneers in cherry finish for GBI-34 w/ARF-34, FAF-34 or LF-34	\$899.00
RIO-41-BOOK CASE	Rio Grande book shelf cabinet in wood solids and veneers in cherry finish for GBI-41	\$399.00
RIO41-CAB-RIS-K	Rio Grande cabinet & base in Alder in wood solids and veneers in cherry finish for GBI-41 w/ARF-41, FAF-41 or LF-41	\$1,049.00

ITEM NUMBER	ITEM DESCRIPTION	MSRP
Fireplace Inserts		
GER-GI-R	Additional/Replacement IR Remote for GER & GI fireplaces	\$49.00
GI-29	29” Electric Fireplace Insert. Includes heater, IR remote, 6ft cord, log fire media	\$599.00
GI-32-ZC	32” Electric Zero Clearance Fireplace Insert, Includes heater, IR remote, 6ft cord, log fire media	\$599.00
HTG-W	Heritage Cabinet. White finish. Must order GI-29 w/IS-36 or GI-32-ZC w/IS-36-ZC for complete look	\$599.00
IS-36	36” Insert surround for GI-29	\$79.00
IS-36-ZC	36” Insert surround for GI-32-ZC	\$79.00
IS-36-ZC-B	36” bottom surround for GI-32-ZC, 4” height	\$49.00
IS-42	42” Insert surround for GI-29	\$99.00
IS-42-ZC	42” Insert surround for GI-32-ZC	\$99.00
IS-42-ZC-B	42” bottom surround for GI-32-ZC, 4” height	\$49.00
Mantels		
GWMT-60	Gallery 60” linear supercast wood-look mantel. Aged cedar in a tavern finish.	\$799.00
GWMT-72	Gallery 72” linear supercast wood-look mantel. Aged cedar in a tavern finish.	\$849.00
Packages		
CCR-34-ARF-K	Columbia Cabinet w/34” Built in and Arch Rectangular Front. COL-COR-RIS-K, GBI-34, ARF-34	\$2,097.00
CCR-34-FAF-K	Columbia Cabinet w/34” Built in and Full Arch Front. COL-COR-RIS-K, GBI-34, FAF-34	\$2,037.00
CCR-34-LF-K	Columbia Cabinet w/34” Built in and Louvre Front. COL-COR-RIS-K, GBI-34, LF-34	\$1,867.00
RIO-34-ARF-K	Rio Grande Cabinet w/34” Built in and Arch Rectangular Front. RIO-34-K, GBI-34, ARF-34	\$1,997.00
RIO-34-FAF-K	Rio Grande Cabinet w/34” Built in and Full Arch Front. RIO-34-K, GBI-34, FAF-34	\$1,937.00
RIO-34-LF-K	Rio Grande Cabinet w/34” Built in and Louvre Front. RIO-34-K, GBI-34, LF-34	\$1,747.00
RIO-41-ARF-K	Rio Grande Cabinet w/41” Built In and Arch Rectangular Front. RIO-41-K, GBI-41, ARF-41	\$2,547.00
RIO-41-FAF-K	Rio Grande Cabinet w/41” Built in and Full Arch Front. RIO-41-K, GBI-41, FAF-41	\$2,447.00
RIO-41-LF-K	Rio Grande Cabinet w/41” Built in and Louvre Front. RIO-41-K, GBI-41, LF-41	\$2,217.00

WARRANTY

PRODUCT CATEGORY	WARRANTY INFORMATION
FIRE TABLES & FIRE PITS	<ul style="list-style-type: none">• Limited lifetime warranty on all stainless steel burners.• One year warranty on ignition & electronics.• One year finish warranty and three year structural warranty on all fire pit bases.
OUTDOOR FIREPLACES	<ul style="list-style-type: none">• Limited lifetime warranty on all stainless steel burners.• One year warranty on ignition & electronics.• One year finish warranty and five year structural warranty on all fire place bases and tops.
VENTURI SPINNING FLAME	<ul style="list-style-type: none">• One year warranty on base.• 30 day warranty on glass.
PERGOLAS	<ul style="list-style-type: none">• One year warranty on finish.• Three year warranty on structure.
ELECTRIC GRILLS	<ul style="list-style-type: none">• Limited lifetime warranty on all stainless steel.• One year warranty on electronics.
GALLERY COLLECTION ELECTRIC FIREPLACES	<ul style="list-style-type: none">• Two year warranty on LED lighting, fan and heater system.• One year warranty on remote.
OUTDOOR FURNITURE	<ul style="list-style-type: none">• Three year warranty on framework.• Cushion warranty varies from one to three years.
OUTDOOR KITCHENS	<ul style="list-style-type: none">• One year complete warranty• One year warranty on stucco/tile• Silicone grout sealant must be applied once a year• 90-day parts/labor warranty on Stereo, 1-year parts warranty• One year warranty on Side-burner• One year parts and labor warranty on Refrigerator & Compressor• 5 year structural warranty
ACCESSORIES	<ul style="list-style-type: none">• One year warranty on vinyl covers (fire tables, grills, fireplaces)



CONTACT



THE OUTDOOR GREATROOM COMPANY

2015 Silver Bell Road
Suite 195
Eagan, MN 55122

Phone: 651.287.7460
Toll Free: 1.866.303.4028
Fax: 651.287.7461

Sales@OutdoorRooms.com

OutdoorRooms.com



We want your photos!

Do you love your OGC product? Send us your best photos to sales@outdoorrooms.com.

By submitting your photos you are allowing OGC to use the photo for marketing purposes. Professional credit given when requested. Please send .jpg photos with a resolution at or above 1920 x 1080. Photos taken out of direct sunlight at sunrise or sunset are preferred. We can't wait to see your projects!

Dealer Contact:



OutdoorRooms.com

1.866.303.4028

sales@outdoorrooms.com